

BUKIT TIMAH

Growing Together

与我们的武吉知马居民
同耕耘、同收获

Pesanan untuk
penduduk Bukit Timah

புக்கிட் தீமா
குடியிருப்பாளுக்கு
ஒரு செய்தி



Dear Residents,

Bukit Timah has no shortage of gardening enthusiasts, who take pride in growing their own vegetables, fruits and herbs. With community gardens found in Eng Kong Cheng Soon, Toh Yi, Mayfair Park, and now Trivelis, more of our residents can hone their gardening skills and share harvests with neighbours. On the cover of this book is one such harvest at the Toh Yi Community Garden.

Our community, too, is growing. Over the last four and a half years, we have welcomed more than 900 households into two new build-to-order (BTO) estates, Clementi Ridges and Clementi Gateway. This number will increase when Clementi NorthArc is completed in the near future. We now have a total of 13 HDB and private estate neighbourhoods with their own volunteer committees to organise bonding activities and advocate for municipal issues on behalf of residents – more than twice the number when I began serving you in 2011.

Meeting you face-to-face remains a key priority for me. I have continued to do so through door-to-door visits, neighbourhood gatherings and street parties. We have also introduced a series of Saturday breakfast talks to share information on policies, and hear residents' views.

Being in close touch with residents has allowed us to initiate projects and resolve issues that we know matter to most of you.

As we age, ensuring connectivity and mobility becomes more important. We have been improving barrier-free access (BFA) in our Division by working with



partner agencies to put in lifts, ramps and sheltered walkways, especially when connecting to transport nodes. We now have a pedestrian overhead bridge linking Blk 320 Clementi Avenue 4 and Clementi MRT station, which provides the critical "last-mile" for a sheltered and barrier-free route from void deck to MRT for our Clementi Avenue 4 residents. With another sheltered walkway planned for Firefly Park, this "last-mile" will eventually serve residents in Clementi Avenue 6 too.

Infrastructure improvements have also taken place in our private estates. Under the Estate Upgrading Programme, many households in the Toh Tuck estate can now enjoy safer walks in the neighbourhood, in an aesthetically pleasing environment, after new footpaths have been created on covered drains. We have also welcomed not one, but two new parks in private estates – one an interim park on a site identified and supported by resident volunteers along Sian Tuan Avenue, and the other at the junction of Kheam Hock Road and University Road. We have also continued to make enhancements to existing playgrounds, parks and common facilities in both private and HDB estates.

With a stronger team of volunteers, we have been able to deliver better programmes to support the needs and aspirations of our community. I was

particularly glad that we set up "BT200", a volunteer team dedicated to identifying vulnerable families and addressing the complex social, financial and emotional needs they face. We have also begun formulating our very own Bukit Timah Sustainability Plan to do our part for the environment and future generations. One example is the "Step Out and Clean Up BT!" project where residents joined forces with volunteers from outside our community to remove the invasive *Dioscorea* weed from the Bukit Timah Forest. And with the recent outbreak of COVID-19, our volunteers have stepped up by manning face mask collection points in both HDB and private estates, and also initiated projects of their own to help the vulnerable.

That's not all, for yet larger projects are in the pipeline. We have commenced detailed planning for the Bukit Timah Community Hub, an integrated project combining the Bukit Timah Market and Food Centre, the Bukit Timah Community Club, as well as Pei Hwa Presbyterian Primary School's sports facilities. We look forward to the completion of the Rail Corridor, the Rifle Range Nature Park as well as a bold and exciting Linear Sky Park above the Bukit Timah canal.

I am thrilled with the vision of what we can achieve here in Bukit Timah. I am privileged to be among you, our residents – working together, creating together, growing together.

Sim Ann

Senior Minister of State,

Ministry of Communications and Information

Ministry of Culture, Community and Youth

MP and Grassroots Advisor,

Holland-Bukit Timah GRC (Bukit Timah)

Vice-Chairman of Holland-Bukit Panjang Town Council

亲爱的居民，

武吉知马不乏园艺爱好者。位于永康正顺、道义、玫菲园及新建的 Trivelis 社区菜园，让更多居民大展园艺，和邻居共享收成。本书的封面，就是道义社区菜园的成果。

我们的社区也在过去四年半里茁壮成长。我们新增的预购组屋——Clementi Ridges 和 Clementi Gateway，迎来了900多户家庭。当 Clementi NorthArc 竣工后，我们将迎来更多新邻居。如今，共有13个组屋区和私宅区设有各自的居民委员会，负责组织联谊活动及代表居民提出市政问题。这是我在2011年开始为您服务时的两倍。

和居民见面交流仍是我的首要任务，除了继续做家访和办社区聚会，我们推出了一系列周六早餐聚会，分享政策信息和聆听居民的反馈。我们也根据这些反馈，推展多数居民所重视的项目、解决备受关注的问题。

随着居民年龄增长，确保社区设施便于出行变得日益重要。我们安装电梯、建设斜道，还有连接巴士站及地铁站的有盖走道，致力于改善无障碍通道。连接金文泰4道大牌320组屋和金文泰地铁站的人行天桥刚竣工不久，为居民提供直达地铁站的有盖无障碍通道。我们计划在萤火虫公园内兴建另一个有盖走道，让金文泰6道的居民通往地铁站时也可以享有一路遮雨无障碍的方便。

我们私宅区的基础设施也有所提升。在私宅区翻新计划下，道德区的水沟加盖，铺设了新的走道。私宅区也迎来两个新公园；一个是位于祥瑞道由居民义工物色具体地点的临时公园，另一个是位于谦福路和大学路的交界处的正规公园。我们将继续改善组屋区和私宅区的游乐场、公园和公共设施。

有了更强大的义工团队，我们推出了更多种类的活动与计划以满足社区内的不同需求。最令我欣慰的是，我们成立的“BT200”义工小组，致力于找出弱势家庭，协助他们解决社会、财务和心理上的综合需求。我们也启动区内的可持续发展管理计划，为环境和后代尽力。例如居民参与“Step Out and Clean Up BT!”活动，在武吉知马丛林清除有害爬藤，以保护原始生态。冠病疫情暴发后，我们的义工更是义不容辞，在本区多个地点分发口罩和其他物资，关爱特别需要帮助的人群，发挥守望相助的精神。

我们也开始详细规划将兴建的武吉知马社区中心，这是由武吉知马巴刹和熟食中心、武吉知马民众俱乐部及培华长老会小学体育设施组成的综合项目。我们期待的建设还包括铁道走廊、射靶场自然公园及武吉知马水道上的空中花园。我对武吉知马的未来充满憧憬，也很荣幸能成为这个社区的一分子，与您共同努力、共同创造、共同成长。

沈颖

Penduduk yang dihormati,

Bukit Timah tidak kekurangan penggemar berkebun. Di kulit buku ini memaparkan hasil kutipan kebun di Taman Masyarakat Toh Yi. Masyarakat kita juga semakin berkembang. Pertemuan secara bersemuka kekal menjadi keutamaan saya. Saya terus berbuat demikian melalui lawatan dari rumah ke rumah dan pertemuan di kawasan kejiranan. Dengan penularan COVID-19, sukarelawan kami telah mengagihkan pelitup di estet HDB dan estet swasta.

Kami telah meningkatkan akses yang bebas halangan untuk dipasang di lif, tanjakan dan laluan berbumbung. Salah satu contoh ialah jejantas pejalan kaki yang menghubungkan Blok

320 Clementi Avenue 4 dan MRT Clementi, bagi melengkapkan laluan berbumbung bebas halangan bagi penduduk Clementi Avenue 6. Kami akan terus meningkatkan taman permainan, taman dan kemudahan bersama.

Akhir sekali ialah Hab Masyarakat Bukit Timah, menggabungkan Pusat Penjaja dan Pasar Bukit Timah, Kelab Masyarakat Bukit Timah dan juga kemudahan sukan Sekolah Rendah Pei Hwa Presbyterian. Saya juga rasa hormat bersama anda, penduduk kami – bekerjasama, mencipta dan membesar bersama-sama.

Sim Ann

அன்பார்ந்த குடியிருப்பாளர்களே,

புக்கிட் தீமாவில் தோட்டக்கலை ஆர்வலர்களுக்குப் பஞ்சமில்லை. இந்தப் புத்தகத்தின் முன்பக்கத்தில் டோ யீ சமூகத் தோட்டத்தின் அமோகமான அறுவடை இடம்பெற்றுள்ளது. இந்தத் தோட்டத்தைப் போலவே நம் சமூகமும் செழிப்பாக வளர்கிறது. உங்களை நேருக்கு நேர் சந்திப்பது எனக்கு மிகவும் முக்கியமான ஒன்றாகும். வீடு வீடாக மேற்கொள்ளும் வருகைகள், அக்கம்பக்க ஒன்றுசுடல்கள் ஆகியவற்றின்மூலம் இதனை நான் தொடர்ந்து நிறைவேற்றி வருகிறேன். அண்மையில் கொவிட்-19 கொரோனா கிருமிப் பரவலை முன்னிட்டு, எங்கள் தொண்டியியர்கள் வீடமைப்பு வளர்ச்சிக் கழகக் குடியிருப்புப் பேட்டைகளிலும் தனியார் குடியிருப்புகளிலும் முகக் கவசங்களை விநியோகித்தனர்.

நாங்கள் மின்தூக்கிகள், சாய்வுப்பாதைகள், கூரையுள்ள நடைபாதைகள் ஆகியவற்றுடன் தடங்கலற்ற நடமாட்ட வசதியை மேம்படுத்தி வருகிறோம். கிளமென்டி அவென்யூ 4 புளோக் 320-ஐ கிளமென்டி பெருவிரைவு இரயில் நிலையத்துடன் இணைக்கும் மேம்பாலம் இதற்கு ஓர்

எடுத்துக்காட்டு. கிளமென்டி அவென்யூ 4-ல் வசிக்கும் குடியிருப்பாளர்களுக்குக் கூரையுள்ள தடங்கலற்ற நடமாட்டப் பாதையை அமைத்துக் கொடுப்பது இதன் நோக்கம். அதோடு, ஃபயர்ஃபிளை பார்க்கில் அமைக்கப்படும் மற்றொரு கூரையுள்ள நடைபாதை, கிளமென்டி அவென்யூ 6-ன் குடியிருப்பாளர்களுக்கு நன்மையளிக்கும்.

விளையாட்டுத் திடல்கள், பூங்காக்கள், பொது வசதிகள் ஆகியவற்றையும் நாங்கள் தொடர்ந்து மேம்படுத்துவோம்.

இறுதியாக, புக்கிட் தீமா சந்தை, உணவு நிலையத்தையும் புக்கிட் தீமா சமூக மன்றத்தையும் ஒருங்கிணைக்கும் புக்கிட் தீமா சமூக மையம், பெய் ஹுவா பிரஸ்பிடேரியன் தொடக்கப்பள்ளியின் விளையாட்டு வசதிகள் ஆகியன குறிப்பிடத்தக்கவை. குடியிருப்பாளர்களாகிய உங்களில் ஒருவராக இருந்து, நமது புக்கிட் தீமாவுக்காக உங்களோடு சேர்ந்து செயல்பட்டு, சேர்ந்து உருவாக்கி, சேர்ந்து வளர்ச்சி அடைவதை எனது பாக்கியமாகக் கருதுகிறேன்.

Sim Ann

We stay in close touch with our residents, and value their views.

我们上门探访，紧密沟通，
并重视居民的看法。

Kami kekal rapat dengan
penduduk, dan menghargai
pandangan mereka.

நாங்கள் குடியிருப்பாளர்களுடன்
எப்போதும் தொடர்பிலிருந்து,
அவர்களின் கருத்துகளை
மதிக்கிறோம்.



“ We find it a joy conversing with Ms Sim Ann during house visits, she is always very approachable and has solved many of our concerns in the neighbourhood. ”

Angelyn, Clementi Gateway

We have improved recreational spaces...

我们改善了区内的休闲设施...

Kami telah meningkatkan ruang-ruang rekreasi ...

பொழுதுபோக்கு இடங்களை மேம்படுத்தி இருக்கிறோம்...

RECREATIONAL SPACES



The refurbished Ulu Pandan Park Connector is the ideal place for a morning jog or an evening stroll. The new Park Connector on the canal's north bank doubles the recreational options available to residents



The enhanced trails at Bukit Timah Hill offer trekkers an even better experience at our unique Nature Reserve



Bicycle wheeling ramps installed at the pedestrian overhead bridge connecting Hindhede Road/Bukit Timah Nature Reserve to Cheong Chin Nam Road

...added parks, playgrounds, community gardens and more...

...增建公园、儿童游乐场、
社区菜园等设施...

... tambah taman, taman
permainan, taman masyarakat
dan banyak lagi ...

...பூங்காக்கள், விளையாட்டுத்
திட்கள், சமூகத்
தோட்டங்களோடு இன்னும்
பலவும் அமைத்திருக்கிறோம்...

PARKS AND COMMUNITY GARDENS



Eng Kong Cheng Soon Community Garden is home to an innovative aquaponics research project and different species of fruits, herbs and vegetables



Trivelis Community Garden - the latest addition to our neighbourhood gardens



Sian Tuan Interim Park was established in 2018 on a site chosen by our volunteers



Toh Yi Community Garden has been winning awards for its outstanding produce and also playing a role in strengthening friendships in the estate



Kheam Hock Park, opened in 2019, is situated at the junction of Kheam Hock Road and University Road

“ Our garden hosted about 60 residents and volunteers (including 2 kindergartens), to plant edibles (vegetables and fruits), and ornamental plants. Gardeners regularly share their produce, such as vegetables with residents, through community organised activities. We also come together for delicious potluck, playing ukulele, learning how to compost, visit 'green' attractions in Singapore and overseas, and recycling used wood to make furniture. These activities have brought our residents closer over the years. ”

**Rina, "Green Fingers" interest group,
Toh Yi Community Garden**

...for our residents to enjoy living among greenery.

...让居民享受绿意盎然的生活环境。

... untuk penduduk menikmati kehidupan serba kehijauan.

...நம் குடியிருப்பாளர்கள் பசுமையான சூழலில் மகிழ்ச்சியாக வாழ்வதற்காக.

CLEMENTI FIREFLY PARK



The Clementi Firefly Park sits at the heart of five different neighbourhoods, and draws residents to have a good time during community events...



...such as Halloween...



...the PassionArts Festival...



...and a Funtastic Day that involved overnight camping and an obstacle race

FITNESS CORNERS AND PLAYGROUNDS



New fitness corner at Blk 202 Clementi Avenue 6



Refurbished fitness corner in front of Blk 2 Toh Yi Drive



Zip-line feature at Watten Heights Playground



Golden Rise Playground along Lorong Kismis



Refurbishment of Bougainvillea Park with addition of sheltered walkway and bicycle racks

We continued improving accessibility and connectivity for our residents...

为了让居民享有更多出行的便利...

Kami terus meningkatkan aksesibiliti dan daya hubungan untuk penduduk ...

நம் குடியிருப்பாளர்களின் செளகரியத்திற்காக இணைப்புகளையும் பயன்பாட்டு வசதியையும் தொடர்ந்து மேம்படுத்துகிறோம்...

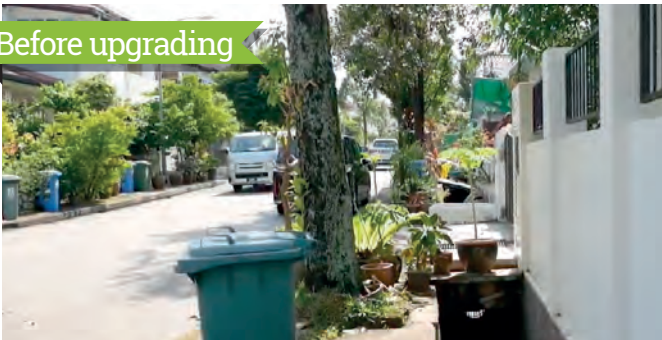
PEDESTRIAN OVERHEAD BRIDGE LINKING CLEMENTI AVENUE 4 WITH CLEMENTI MRT STATION



The new pedestrian overhead bridge across Clementi Avenue 4 provides sheltered, barrier-free "last-mile" access for some 3,800 households to the MRT station

TOH TUCK ESTATE UPGRADING PROGRAMME

Before upgrading



After upgrading



The Toh Tuck Estate was included under Batch 9 of MND's private estate upgrading programme. Many drains were covered and new pedestrian footpaths created

WE ADDED LIFTS TO MULTI-STOREY CARPARKS



Lift at the multi-storey carpark at Blk 309A Clementi Avenue 4



Lift at the multi-storey carpark at Blk 318A Clementi Avenue 4

WE ADDED LIFTS TO PEDESTRIAN OVERHEAD BRIDGES



Lifts serving the pedestrian overhead bridge between Coronation Plaza and the Shelford area



Lifts serving the pedestrian overhead bridge between Firefly Park and Blk 204 at Clementi Avenue 6

WE HAVE BUILT BARRIER-FREE ACCESSIBILITY IN OUR NEIGHBOURHOODS



An access ramp connecting the multi-storey carpark at Blk 309A Clementi Avenue 4 to Blk 310



Barrier-free access ramps connecting the carpark basement at Blk 318A Clementi Avenue 4 to Blk 318

Completed & Ongoing Projects



1 Improved covered linkway at Blk 17 Toh Yi Drive



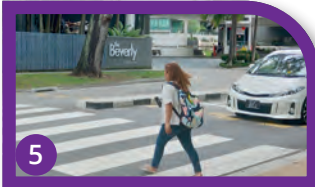
2 Covered linkway joining Blk 4 to 13 Toh Yi Drive



3 Temporary footpath and staircase linking Blk 1 Toh Yi Drive to bus stop



4 Toh Tuck estate upgrading programme



5 New zebra crossing near Beverly



6 Refurbished Eng Kong playground



7 Eng Kong Cheng Soon Community Garden



8 Refurbished Golden Rise playground



9 Refurbished Cheng Soon playground



10 Refurbishment of Ulu Pandan Canal Park Connector (South bank)



11 New Elderly Fitness Corner between Blk 202 & 205 Clementi Avenue 6



12 Completion of LUP & HIP for Blks 201-206 Clementi Avenue 6



13 Lifts added to pedestrian overhead bridge across Clementi Avenue 6



14 Trivelis Community Garden



15 Barrier-free access ramp to footpath at Blk 309A Clementi Avenue 4



16 Covered linkway at Blk 318A to 318 Clementi Avenue 4

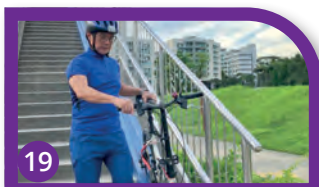


17 Pedestrian overhead bridge across Clementi Avenue 4



18 Signalised pedestrian crossing at Commonwealth Avenue West near Blk 317





19 Bike wheeling ramps added to pedestrian overhead bridge connecting Hindhede Road to Cheong Chin Nam Road



20 Sound barriers along PIE between Greenbank Park and Swiss View



21 Refurbished Mayfair Park playground



22 Lighted footpath connecting Yarwood Avenue to Hua Guan Crescent



Upcoming Plans

1 Construct barrier-free access ramp near community garden of Blk 4 Toh Yi Drive

2 Upcoming Bukit Timah Community Hub

3 Construct shelter and lighting over existing BBQ pits at Blk 208 Clementi Avenue 6

4 Construct covered walkway at Blk 312B & 312C Clementi Avenue 4 to pedestrian overhead bridge

5 Upgrade elderly fitness corner at Blk 317 Clementi Avenue 4

6 Upgrade children's playground at Blk 319 Clementi Avenue 4

7 Upgrade children's playground at Blk 305 Clementi Avenue 4 gable end

8 Construct community plaza and BBQ Pit in front of Blk 307 Clementi Avenue 4

9 Upgrade children's playground in front of Blk 307 Clementi Avenue 4

10 Estate Upgrading Project (EUP) at Watten Estate

11 Ulu Pandan Canal Park Connector (North bank)

12 Opening of former Toh Tuck Secondary School sports facilities for community use

13 Add lift to Blk 1A multi-storey carpark at Toh Yi Drive

14 New road from former Brookvale Park site to Clementi Road

15 Construct interim community park along Wilmonar Avenue

16 Add dog run to Mayfair Park playground



23 Sian Tuan Interim Park



24 Walk2Ride shelter along Dunearn Road



25 Refurbished Greenwood Crescent playground



26 Refurbished Watten Heights playground



27 Walk2Ride shelters near Tan Kah MRT station



28 Refurbished Bougainvillea Park



29 Lifts added to pedestrian overhead bridge near Coronation Plaza



30 Adam Park Connector



31 Newly-built Kheam Hock Park



32 Sheltered path & underpass from Trevores Crescent area to Stevens MRT station



33 Walk2Ride shelters near Whitley Road

...by providing more linkways and shelters, and improving transport.

...我们增添连道、遮雨盖和
改善交通。

... dengan menyediakan
lebih banyak laluan,
laluan berbumbung dan
meningkatkan pengangkutan.

...அதிகமான
இணைப்புப்பாதைகளும்
நிழல்தரும் கூரைகளும்
அமைத்து, போக்குவரத்தை
மேம்படுத்தினோம்.

WE ENHANCED LINKWAYS & ACCESSIBILITY IN TOH YI ESTATE



We have completed the internal network of covered linkways within Toh Yi estate, including this major link between Blk 4 and Blk 13



We added a left-turn-only exit to the multi-storey carpark at Blk 1A Toh Yi Drive to alleviate peak-hour congestion



Walk2Ride sheltered walkways connecting Toh Yi to Beauty World MRT

IMPROVED CONNECTIONS FOR PRIVATE ESTATES - DUNEARN ROAD & STEVENS AREA



Sheltered underpass connecting Dunearn Road and Whitley Road to Stevens MRT station



Sheltered linkway stretching along Dunearn Road

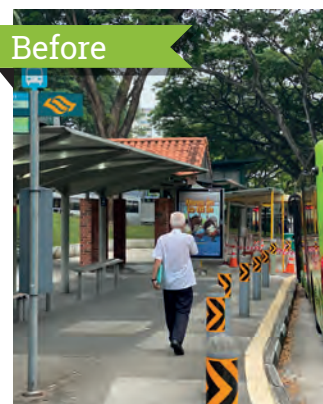


Sheltered linkway outside Raffles Town Club along Whitley Road and Dunearn Road

NEW BUS SERVICE AND IMPROVEMENT TO BUS STOPS



Introduction of Bus Service 667 provides residents living along Clementi Avenue 4 an express line to the Central Business District



Before



After

The new extended design of bus stops along Clementi Avenue 4 now offers better coverage from inclement weather

We strive to build a caring community...

我们致力于建立一个互相
关怀的社区...

Kami berusaha membina
masyarakat penyayang ...

பரிவுமிக்கச் சமூகத்தை
வளர்க்க நாங்கள் முயற்சி
எடுக்கிறோம்...

MASK DISTRIBUTION AND COMMUNITY OUTREACH DURING COVID-19 PERIOD



Ensuring elderly residents with mobility challenges obtain their mask packages



Distributing donated hand sanitizers to stallholders at Bukit Timah Market and Food Centre

Bowling them over with kindness



Senior Minister of State for Culture, Community and Youth Sim Ann and (from left) national bowlers Muhd Danial and sisters Cherie and Daphne Tan were part of a team of about 50 Singapore Bowling Federation (SBF) athletes, coaches and employees who spent yesterday morning packing and distributing masks and hand sanitizers to Clementi and Toh Yi residents. In light of the coronavirus, they are supporting ground-up initiative #OpsHandsOn headed by FutuReady Asia, founded by SBF honorary secretary Delane Lim, and educating elderly residents on mask usage and regular hand washing. PHOTO: MCCY

Distributing donated care packages with hand sanitizer and masks to our elderly residents together with Team Singapore bowlers (Source: The Straits Times, 17 Feb 2020)



Distribution points were set up at both HDB and private estates for residents' convenience

BUKIT TIMAH DAY OF GIVING



Residents donating pre-loved items during the event



Residents got a chance to meet some of the furry friends from Therapy Dogs Singapore



Bukit Timah Day of Giving 2019

BUKIT TIMAH 200 (BT200)



Visiting and caring for our beneficiaries under the BT200 programme

...by attending to residents' concerns,

...细心地聆听居民的心声，

... dengan menangani keprihatinan penduduk ,

...குடியிருப்பாளர்களின் அக்கறைகளை நிவர்த்தி செய்கிறோம்,



Providing an update to residents on the Trivelis RC Centre



Townhall to gather feedback for Watten Estate's Playgrounds

Brookvale Park's new owners to get en bloc hongbao as sale is approved

Redevelopment includes plan to open another route from Sunset Way area to Clementi Rd

By Yunita Ong
yunitaso@sph.com.sg
@yunitaOngBT
Singapore

NOW that a sale order has just been granted for Brookvale Park condo's en bloc, buyer Hoi Hup Sunway will soon be able to embark on its redevelopment, which includes a plan to extend Sunset Way by cutting through the site and a forested area to connect to Clementi Road, its spokesperson told *The Business Times* on Friday.



But some owners later filed objections in part because they disagreed with the report comparing the 99-year leasehold condo to sites with 99-year leases.

A stop order was issued later that year. The settlement was reached following a day of cross-examination of the valuer on Wednesday.

The terms of the settlement did not involve a change in how the proceeds were distributed among owners.

Asked why the company maintained a keen interest in this development throughout the sale's complications, Hoi Hup Sunway's spokesperson said: "We find the

考虑居民反馈后 翠湖园发展商让出一成土地建新路通往金文泰路

胡靖洁 chm@qph.com.sg

金文泰的翠湖园集团集体出售项目，发展商在考虑居民反馈后，将建一条新路连接斜阳大道与金文泰路。

新路将斜阳大道（Sunset Way）一带所有居民提供更大便利，解决目前只有一条道路进出的情况。

负责翠湖园（Brookvale Park）重新发展工程的发展商是海峡双威，海峡双威总经理孔伟

良指出，新路会跨越马裕军旁旁路，确切位置有待当局批准。新路预计今年建造，以便私宅建筑工程开工。私宅建造期间，建筑车辆会使用这条新路进出，减少对周围居民的不便。

她透露，发展商同居民讨论后，决定在斜阳大道末端建新路连接至金文泰路。为了让新路造福所有居民，而不仅是新私宅的居民，发展商同意让出一成的发展地段面积来建路。新路不仅能惠及新私宅项目，也可分散路

建局和陆路交通管理局，供当局做可行性研究报告时参考。

居民提出的一个意见，包括建一条可直通金文泰路的新路，应对居民目前仅利用斜阳大道出入的情况。

她透露，发展商同居民讨论后，决定在斜阳大道末端建新路连接至金文泰路。为了让新路造福所有居民，而不仅是新私宅的居民，发展商同意让出一成的发展地段面积来建路。新路不仅能惠及新私宅项目，也可分散路

只需一机在手 立国一代优惠“唾手可得”

由科技研发的“人生智慧助手”（Mentor of Life）应用程序，让长者通过应用程序浏览和下载各种资讯及可享有的政府津贴。立国一代长者也可向家人“电子”上，省去奔波劳累立国一代的麻烦。



立国一代长者可通过手机应用程序浏览和下载各种资讯及可享有的政府津贴。立国一代长者也可向家人“电子”上，省去奔波劳累立国一代的麻烦。

由科技研发的“人生智慧助手”（Mentor of Life）应用程序，让长者通过应用程序浏览和下载各种资讯及可享有的政府津贴。立国一代长者也可向家人“电子”上，省去奔波劳累立国一代的麻烦。

由科技研发的“人生智慧助手”（Mentor of Life）应用程序，让长者通过应用程序浏览和下载各种资讯及可享有的政府津贴。立国一代长者也可向家人“电子”上，省去奔波劳累立国一代的麻烦。

立国一代长者可通过手机应用程序浏览和下载各种资讯及可享有的政府津贴。立国一代长者也可向家人“电子”上，省去奔波劳累立国一代的麻烦。

由科技研发的“人生智慧助手”（Mentor of Life）应用程序，让长者通过应用程序浏览和下载各种资讯及可享有的政府津贴。立国一代长者也可向家人“电子”上，省去奔波劳累立国一代的麻烦。

由科技研发的“人生智慧助手”（Mentor of Life）应用程序，让长者通过应用程序浏览和下载各种资讯及可享有的政府津贴。立国一代长者也可向家人“电子”上，省去奔波劳累立国一代的麻烦。

立国一代长者可通过手机应用程序浏览和下载各种资讯及可享有的政府津贴。立国一代长者也可向家人“电子”上，省去奔波劳累立国一代的麻烦。

由科技研发的“人生智慧助手”（Mentor of Life）应用程序，让长者通过应用程序浏览和下载各种资讯及可享有的政府津贴。立国一代长者也可向家人“电子”上，省去奔波劳累立国一代的麻烦。

由科技研发的“人生智慧助手”（Mentor of Life）应用程序，让长者通过应用程序浏览和下载各种资讯及可享有的政府津贴。立国一代长者也可向家人“电子”上，省去奔波劳累立国一代的麻烦。

立国一代长者可通过手机应用程序浏览和下载各种资讯及可享有的政府津贴。立国一代长者也可向家人“电子”上，省去奔波劳累立国一代的麻烦。

由科技研发的“人生智慧助手”（Mentor of Life）应用程序，让长者通过应用程序浏览和下载各种资讯及可享有的政府津贴。立国一代长者也可向家人“电子”上，省去奔波劳累立国一代的麻烦。

由科技研发的“人生智慧助手”（Mentor of Life）应用程序，让长者通过应用程序浏览和下载各种资讯及可享有的政府津贴。立国一代长者也可向家人“电子”上，省去奔波劳累立国一代的麻烦。

立国一代长者可通过手机应用程序浏览和下载各种资讯及可享有的政府津贴。立国一代长者也可向家人“电子”上，省去奔波劳累立国一代的麻烦。

由科技研发的“人生智慧助手”（Mentor of Life）应用程序，让长者通过应用程序浏览和下载各种资讯及可享有的政府津贴。立国一代长者也可向家人“电子”上，省去奔波劳累立国一代的麻烦。

由科技研发的“人生智慧助手”（Mentor of Life）应用程序，让长者通过应用程序浏览和下载各种资讯及可享有的政府津贴。立国一代长者也可向家人“电子”上，省去奔波劳累立国一代的麻烦。

Townhall meeting with Sunset residents to address their concerns about traffic resulted in a new road being committed by the developer of an upcoming condo, thereby improving access and potentially reducing congestion for all (Source: The Business Times, 2-3 Feb 2019 & Lianhe Zaobao, 3 Feb 2019)

Digital Clinics to help Merdeka Generation residents make the most of their smartphones (Source: Lianhe Zaobao, 16 Sep 2019)

and putting our minds together to solve the problems we face.

集思广益，共同解决区内的
问题。

dan memikirkan secara bersama bagi menyelesaikan masalah yang kita hadapi.

நாம் எதிர்நோக்கும்
பிரச்சனைகளுக்குத்
தீர்வுகாண ஒன்றிணைந்து
சிந்தித்து செயல்படுகிறோம்.



We also do good together, and cherish shared memories.

我们一起参与有意义的活动，留下美好的集体回忆。

Kami lakukan yang terbaik, dan hargai kenangan bersama.

நாம் நல்லனவற்றையும் ஒன்றாகச் செய்து, இனிய நினைவுகளைக் கொண்டாடுகிறோம்.



Keeping Bukit Timah clean and green with volunteers from all ages and walks of life



Rooting out the *Dioscorea sansibarensis*, an invasive weed in Bukit Timah forest

Volunteers help weed out Batman plant in Bukit Timah forest



Children were among the volunteers helping to pull out the *Dioscorea sansibarensis*, also known as the Zanzibar yam or Batman plant, which is threatening to suffocate the natural biodiversity of Bukit Timah forest. ST PHOTO: NG SOR LUAN

Melissa Heng

Batman might be a friend of Gotham, but its plant namesake is creating trouble in the Bukit Timah forest.

More than 200 Bukit Timah residents and volunteers, from couples in their 60s to primary school children, met in an area in Rifle Range Road yesterday to fight an invasive weed - *Dioscorea sansibarensis*, also known as the Zanzibar yam or Batman plant.

It is threatening to suffocate the natural biodiversity of the forest.

Operation *Dioscorea* was organised by the Bukit Timah Citizens' Consultative Committee and the Friends of Bukit Timah Forest, a group comprising members of the nature community, recreational users, schools and nearby residents.

For two hours yesterday, volunteers worked in teams of three to five people to dig up and pull out 900kg of the Batman plant, a herbaceous vine that has large starchy underground tubers and wide bat-like

leaves that can smother other plants.

The weeds are fast-growing and need to be manually removed so that other native plants are not damaged. Once it has established in an area, the forest has little chance of recovery without human intervention.

Its large tubers, which can grow as big as two footballs, make the vine difficult to uproot.

Volunteers had to dig up the roots and prise the tubers manually from the ground, so the weed would not grow back.

Volunteer Leck Lee Hong, 49, a senior IT manager, said that though the work was tough, it was fulfilling. "It felt good to work together with other residents to help the forest. There's a real sense of satisfaction gained from the work."

The mother of five, who lives nearby, said she would be willing to return to the forest if another such project is organised. She would also encourage her children to join in.

Senior Minister of State for Communications and Information Sim Ann, who joined the volunteers in

picking the weeds, said the work was "sweaty but therapeutic".

Ms Sim, the adviser to Bukit Timah Grassroots Organisations, said: "The forest is ours to protect and it is under threat. We can't just send in bulldozers to clear the weeds. We wanted to mobilise the community, to learn about the forest and be involved in saving it."

Participants included parent-child teams from Raffles Girls' Primary School, students from Ngee Ann Polytechnic, and volunteers from Keppel Corporation, Friends of Bukit Timah Forest, Blossom World, Kindred Community and Kowloon Club.

Volunteer Jo Lynn Teh, 33, an entomologist, said the project was a good chance for residents to play their part in protecting the environment.

"I believe we need to care for the biodiversity of our forest, and this is something meaningful to give my time to. The motivation is really to do my small part in helping the environment."

melheng@sph.com.sg

(Source: The Sunday Times, 17 Nov 2019)

Rousing farewell for Bt Timah minimart owners after 20 years

Husband-and-wife shopkeepers have seen customers grow from babies to adults at Toh Yi fixture

Cara Wong

Toh Yi resident Koo Cheng Puay has visited the Lim De Li minimart at 545pm sharp every day for the past 10 years, to pick up a newspaper and chat with the store owner, but the curtain has just come down on their beloved routine.

The minimart, a fixture in the Bukit Timah estate for almost 20 years, closed yesterday but not without a bit of a splash.

Mr Koo, a 74-year-old retired bus timekeeper, was one of many residents who dropped by to say goodbye to owners Lim Kok Peng and Chen Meng Kuen at a farewell party organised by residents.

The event also attracted customers like Deputy Prime Minister



TIME TO MOVE ON

I've grown old, and my kids are all grown up and have their own careers. It's time to move on.

MINIMART OWNER LIM KOK PENG, 64, who has two sons and two granddaughters.

Mr Lim Kok Peng (in red) with his wife Chen Meng Kuen beside him at a farewell party organised by residents yesterday.

The couple are retiring after running Lim De Li minimart in Toh Yi for almost 20 years. With them at the party were (from left) grassroots leader Neo Tian Ying, Deputy Prime Minister Hong Jooi Keat, Holland-Strait Timah GRC MP Sim Ann, and grassroots leader Kenny Sim. Mr Hong and Mr Sim are among long-time customers of the minimart. ST PHOTO: GIN TAY



杂货店夫妇退休

王瑞杰与街坊齐欢送

家人合照
化、社区及青年部高级政务部长沈颖（左六）同林国平一
副总理兼财政部长王瑞杰（左五）和通讯及新闻部善文

Residents and volunteers got together to mark the retirement of Mr and Mrs Lim, operators of a favorite minimart in Toh Yi

(Source: The Sunday Times, 29 Dec 2019 & Shin Min Daily News, 28 Dec 2019)



Durian Fiesta at Clementi Ridges RC



Live screening of World Cup 2018 at Bukit Timah CC, made more memorable by the festive decorations and free *roti prata* organised by volunteers

Looking ahead, we will work harder to harvest a better home for everyone in Bukit Timah.

展望未来，我们将继续与居民共同打造更美好的武吉知马家园。

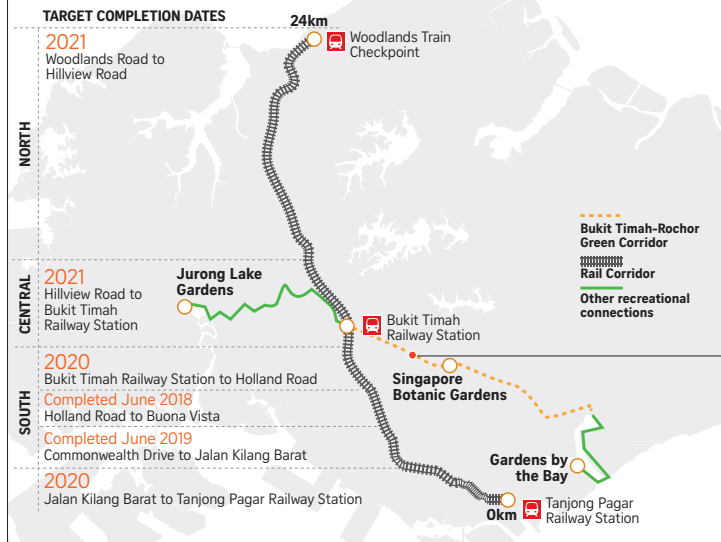
Di masa hadapan, kami akan bekerja lebih keras untuk membangunkan kediaman lebih baik untuk semua di Bukit Timah.

எதிர்வரும் காலத்தில், புக்கிட் தீமாவில் அனைவருக்கும் மேம்பட்ட இல்லத்தை உருவாக்கித்தர மேன்மேலும் கடுமையாக உழைப்போம்.



Artist's impression of the new Bukit Timah Community Hub, combining the Bukit Timah Market and Food Centre as well as a shared sports facility with Pei Hwa Presbyterian Primary School

Connecting Singapore's national gardens



A 1.4km elevated linear park will run above the canal between Bukit Timah and Dunearn roads.

BUKIT TIMAH COMMUNITY HUB



Artist's impression of the upcoming Bukit Timah Hub along Jalan Jurong Kechil



We hope to bring about a clean, green, modern and beautiful "community dining room" for residents

